

# ATTACHMATE. EXTRA! For Windows®95/Windows NT®

version 6.2

**Powerful 32-bit connectivity optimized for IBM® mainframes.**

Bring exceptional power and ease to mainframe applications with EXTRA! for Windows 95/NT, one of Attachmate's family of advanced 32-bit connectivity for information access from any Windows 95 or Windows NT desktop, including NT 4.0.

Anyone requiring access to mainframe information will be able to navigate effortlessly with EXTRA! for Windows 95/NT. With reliable high-performance, EXTRA! supports a multitude of connections to SNA mainframes in your enterprise.

### **32-bit functionality for your entire enterprise.**

EXTRA! for Windows 95/NT has full 32-bit multi-threading to give you revolutionary, reliable operation and uncommon functionality.

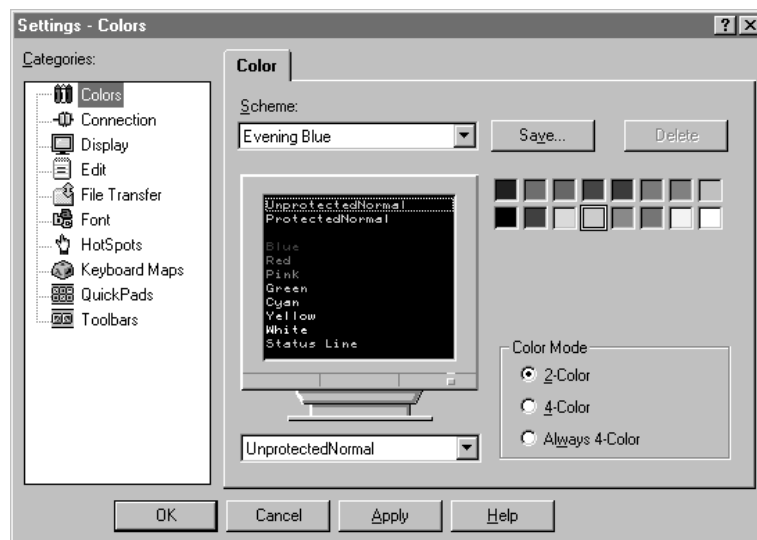
When you put EXTRA! for Windows 95/NT to work, you'll see the difference at once. EXTRA! represents highly effective ways for organizations to work smarter and leverage existing enterprise investments. For users, efficiency and productivity accelerate, the learning curve flattens, support requirements fall and the global cost of computing declines.

### **Host-aware technology dissolves the complexity of host interactions.**

Advanced functionality simplifies your host interactions. Navigate without programming or macros, customize host screens, and integrate host information into your desktop applications.

**Document integration with full OLE 2.0 support.** A technology EXTRA! fully exploits is the ability to create transparent links between Windows documents and host documents.

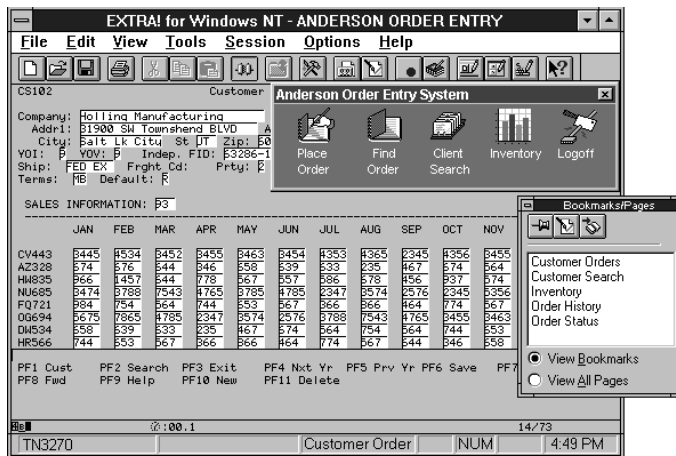
OLE 2.0 technology allows users to link host data to Windows applications such as Microsoft® Office, Lotus® SmartSuite®, and WordPerfect® Office. The information becomes dynamically and transparently linked so any change pertinent to host data will also refresh the corresponding information when you open your desktop application files. No programming or macros are required. Savvy intelligence like this makes EXTRA! for Windows 95/NT a true partner with your host.



*Easily customize host session documents with navigation links, unique connections, QuickPad, hot spots, fonts, colors and toolbars.*

## New in this release

- Windows NT 4.0 support
- Enhanced API performance and support
- 3270 Host Graphics
- 3270 light pen support



*Host access is now just a click away. Attachmate's host-aware technology lets you create bookmarks and on-screen icons that take you where you want to go, extending the ease-of-use and simplicity of web browsers to mainframe systems. Information is acquired transparently and automatically.*

**Treat host sessions as documents.** Tailor host session settings and save them as documents much as you would with any Windows-based application. Each of your host documents can be customized with a unique list of bookmarks and page events, including the location of host information, colors, connection types, hot spots, fonts, toolbars and QuickPad.™

**Place Bookmarks to access information directly and immediatly.** EXTRA! office Client's bookmarks extend the ease-of-use and simplicity of web browsers to enterprise systems. Bookmarks transport users directly to host pages and with page events, give you the easiest possible way to access host applications in your enterprise.

**Fast, efficient file transfers.** FT/Express™ is included and provides a fast and efficient way to transfer binary and text files between an IBM host and your PC. Users can initiate file transfers from within easy-to-use dialog boxes.

**Integrated APPC client.** Also integrated is Attachmate's APPC client, so you can take advantage of the growing use of APPC-compliant applications. This means you can migrate to peer-to-peer data access without jeopardizing your investment in client software.

**Host graphics support.** Full mainframe graphics are available for Windows 95 and Windows NT desktops via integrated host graphics, supporting both programmed symbol graphics and vector graphics.

**LAN install simplifies software distribution.** Network administrators can easily install EXTRA! for Windows 95/NT on a network server for efficient distribution to other users. Program files and user files can be stored wherever you choose.

**The new bedrock for building enterprise client/server applications.** Developing a client/server application that matches specific business processes creates the ultimate in a seamless, customized workspace.

EXTRA! was built from the ground up as a client/server development platform. With support for Attachmate's EXTRA! Developer Series products such as QuickDB,™ QuickApp,® Quick CICS™ or QuickPeer,™ developers have a solid foundation on which to build new enterprise client/server solutions and empower users. Developers can take full advantage of the software's 32-bit APIs to rapidly create graphical, transaction-processing applications. EXTRA! for Windows 95/NT also preserves your investment in 16-bit client/server applications, providing migration protection for your organization.



**Easiest to Use**  
EXTRA! is consistently rated as the easiest to use information access product by The Tolly Group.

## Clearing the path for migration to new technologies.

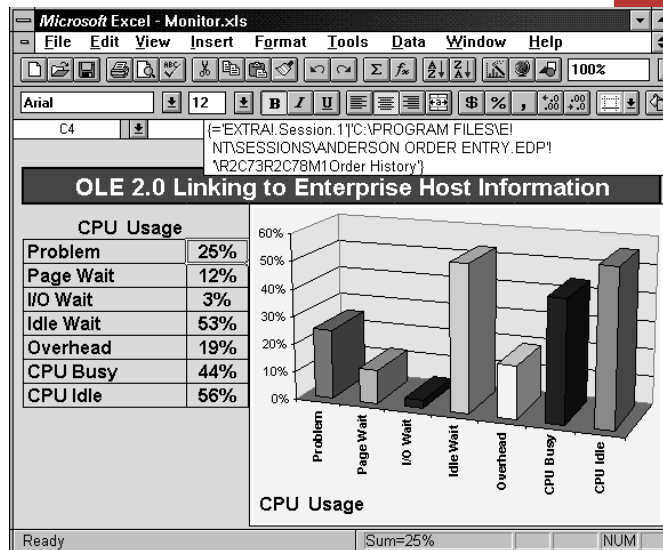
Fundamental to the EXTRA! family of enterprise solutions is Attachmate's commitment to help you make the best decisions for your organization now, and as your computing strategy evolves. Any selection you make brings with it a real partnership with Attachmate.

The depth of Attachmate's EXTRA! product family is your assurance of a smooth transition to future technology and steadily increasing value. From products optimized for single connectivity and single-host access to multi-host solutions and beyond, there's an EXTRA! product that matches your criteria. When your needs reach beyond mainframe access, Attachmate's EXTRA! Personal Client provides maximum value, including a built-in migration path from advanced 16-bit to 32-bit multi-host access, network software management, remote access, and intranet building blocks. Whether your plans include accessing multiple hosts, moving to client/server technology, migrating from SNA to TCP/IP, from LANs to WANs, or the Internet, Attachmate can take you there.

## Unequaled response to crucial issues.

Attachmate responds as no other organization in the industry with 72-hour critical problem code fixes. We guarantee to resolve crucial issues within three business days. This extraordinary level of support is included with SUPPORTWARE!™ Elite, Strategic and Global Plans.

For first-time installations of Attachmate software, we offer 60 days of complimentary SUPPORTWARE!, a service that helps you get up and running and keeps you up-to-date. For information on extended SUPPORTWARE! services, call 800-288-5232.



*Working with host information is as easy as using Windows applications like Microsoft Excel. Simply point and click and let EXTRA! navigate, link and update data without opening a host session.*

Attachmate is the leading supplier of universal information access software to large organizations. More than 45% of all host-connected desktops are now running Attachmate software. These products safely extend Intranets by linking host systems, Internet systems and workgroups together. Award-winning Attachmate products offer solutions for multi-host application and database access, remote access, workgroup productivity, enterprise client/server development, network and software management, and corporate-to-Internet systems integration.

## Call today for more information.

For more information about EXTRA! for Windows 95/NT, contact your local Attachmate reseller or call us toll-free in the United States or Canada at **800-426-6283**. For International Sales information, call USA **206-644-4010** or contact your nearest sales office.

*Attachmate responds as no other organization in the industry with 72-hour critical problem code fixes. We guarantee to resolve crucial issues within three business days.*

**LAN TIMES**  
READERS' CHOICE  
**1996**



Attachmate Corporation  
3617 131st Ave SE  
Bellevue, WA 98006 USA

Phone:  
(800) 426-6283  
(206) 644-4010  
Fax: (206) 747-9924

Customer Support:  
(800) 688-3270

International Fax:  
(206) 649-6675

FaxBack: (206) 649-6595

World Wide Web:  
<http://www.attachmate.com>

Australia (Melbourne)  
(61) 39 694 6711

Australia (Sydney)  
(61) 2 9975 7188

Belgium  
(32) 2-481 07 50

Brazil  
(55) 11 532-2830

Denmark  
(45) 42 17 10 00

Finland  
(358) 0437 5236

France  
(33) 1 4604 1010

Germany  
(49) 89 99 351-0

Hong Kong  
(852) 2 572-8988

Italy  
(39) 2 4870 8077

Japan  
(81) 3 5560 8970

Latin America  
(305) 358 7830

Malaysia  
(603) 245 5660

Mexico  
(52) 5 208 0360

Netherlands  
(31) 20 696 6031

Norway  
(47) 22 62 73 47

Portugal  
(351) 1 7928750

Singapore  
(65) 223 0233

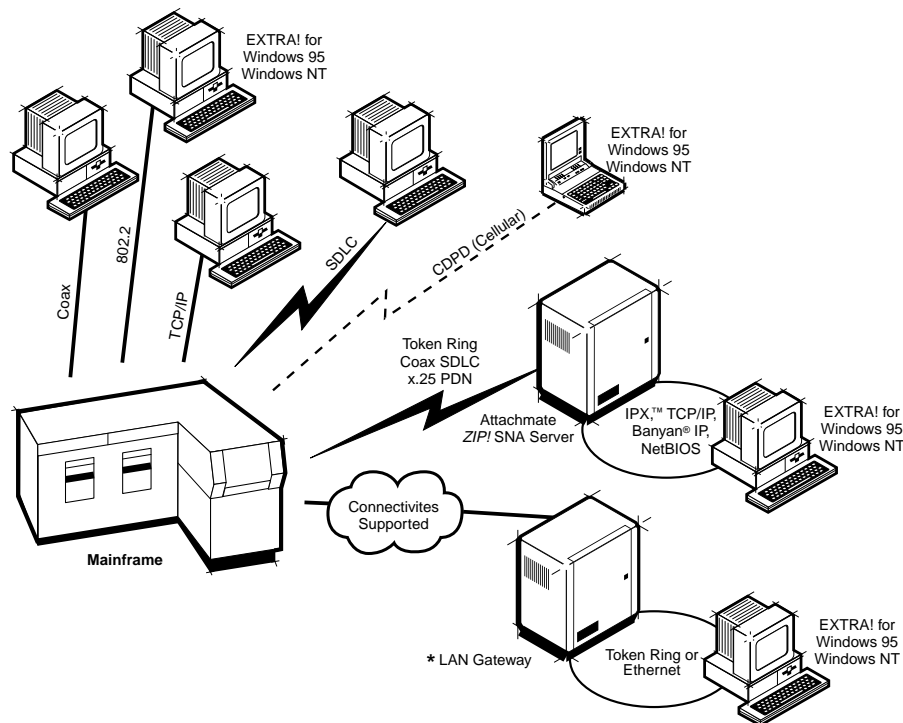
Spain  
(34) 1 300 86 00

Sweden  
(46) 8 6307530

Switzerland (Cham)  
(41) 41 748 32 70

Switzerland (Geneva)  
(41) 22 879 04 10

United Kingdom  
(44) 1 734 890 390



## Features at a Glance

### EXTRA! for Windows 95/NT

#### IBM Mainframe Connectivity

##### Direct Connections

- DFT/Coax
- TN3270 direct
- NCI

##### LAN Connections

- TCP/IP
- IPX/SPX™
- NetBIOS
- 802.2
- APPC
- TN3270e

##### Host Servers/Gateways

- Attachmate ZIP!® SNA Server
- IRMA/LAN™/EP
- IBM Gateway
- IBM CICS™
- Microsoft SNA Server
- NetWare® for SAA®
- Eicon® SNA Gateway

##### Remote Connections

SDLC (Windows 95 and Windows NT)

##### Host Productivity Features

- Intelligent navigation
- FT/Express support
- Proxy firewall support via FTP file transfer
- Bookmarks and page events
- QuickPad

- Full color editing
- Customizable toolbar
- Keyboard mapping
- Dynamic hot spots
- OLE 2.0 Linking
- Silent install (unattended installation)
- 3270 light pen support
- APL keyboard
- IrmaKey keyboard 122-key (Windows 95)

##### Client/Server Development Tool Support

- OLE 2.0 Automation
- APPC
- APPN End Node
- APPN: password encryption
- CPI-C 2.0
- HLLAPI
- EHLLAPI
- WHLLAPI
- WinHLLAPI
- DOS HLLAPI pass through
- Enterprise Access Library,™ a comprehensive set of communication interface function calls.
- EXTRA! Basic

##### Optional Products

- QuickApp
- QuickDB
- QuickCICS
- QuickPeer
- NetWizard®
- RLN® (Remote LAN Node®)

##### System Requirements

Windows 95: 486/DX 33MHz PC running Windows 95, with 12 MB RAM

Windows NT: 486/DX 33MHz PC running Windows NT 3.51/4.0, with 16 MB RAM

 **Attachmate**™

© 1996 Attachmate Corporation. All Rights Reserved. Printed in the USA.

Attachmate, EXTRA!, QuickApp, NetWizard, RLN, Remote LAN Node, and ZIP! are registered trademarks and Enterprise Access Library, FT/Express, QuickPad, QuickDB, QuickPeer, IRMALAN, and SUPPORTWARE! are trademarks of Attachmate Corporation. IBM and SAA are registered trademarks and CICS is a trademark of International Business Machines Corporation. Eicon is a registered trademark of Eicon Technology. Lotus and SmartSuite are registered trademarks of Lotus Development Corporation. Microsoft, Windows, and Windows NT are registered trademarks and BackOffice is a trademark of Microsoft Corporation. NetWare is a registered trademark and IPX and SPX are trademarks of Novell, Inc. WordPerfect is a registered trademark of Corel Corporation. Banyan is a registered trademark of Banyan Systems, Incorporated. All other trademarks or registered trademarks are the property of their respective owners.



Printed on recycled paper